



The image is a wide-angle photograph of a modern, high-end apartment. On the left, a large balcony with a dark metal railing and a wooden deck extends from the living area, offering a view of a city skyline under a blue sky with scattered clouds. The balcony is furnished with a light-colored sofa and a low coffee table. The interior features a large, light-colored sectional sofa with several pillows, positioned in front of a dark, reflective coffee table. In the background, a dining area with a white table and blue chairs is visible, along with a kitchen area featuring a large, abstract painting on the wall. The overall design is contemporary and elegant, with a mix of textures and colors.

EXQUISITE

INSIDE AND OUT

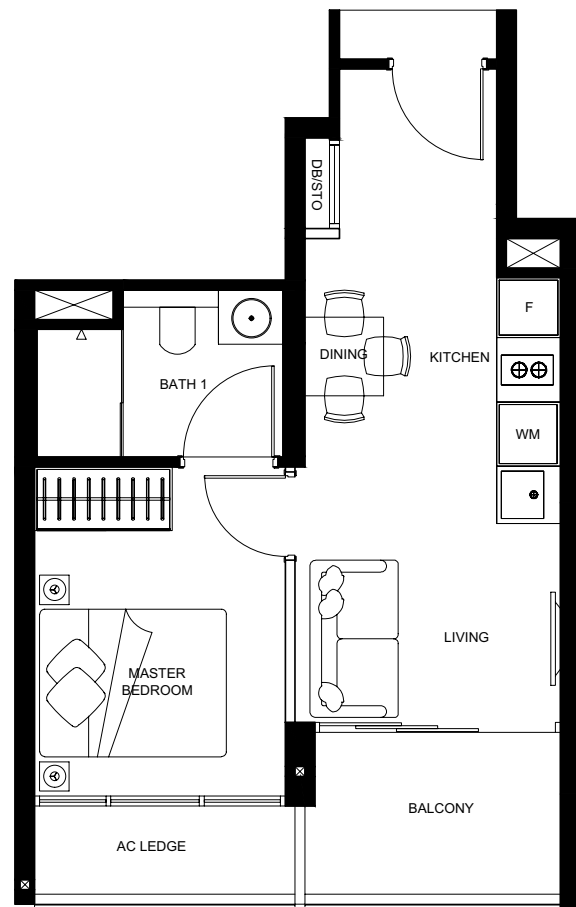
A picturesque North-South orientation affords every unit with an expansive view equally matched by the commodious layouts within. Take your pick from a choice selection of one- to four-bedroom suites — the dream setting for all of life's stories to unfold.

1-BEDROOM

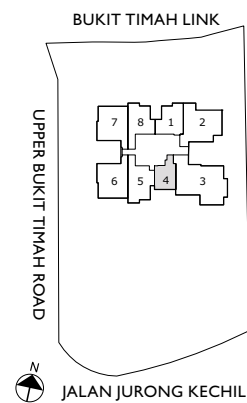
TYPE A

#06-04 – #20-04

40M²



The above plans and illustrations are subject to changes as may be required and approved by the relevant authorities. Floor areas are approximate measurements and are subjected to final survey. The balcony shall not be enclosed unless with the approved screen. For an illustration of the approved balcony screen, please refer to the diagram annexed hereto as "annexure A".

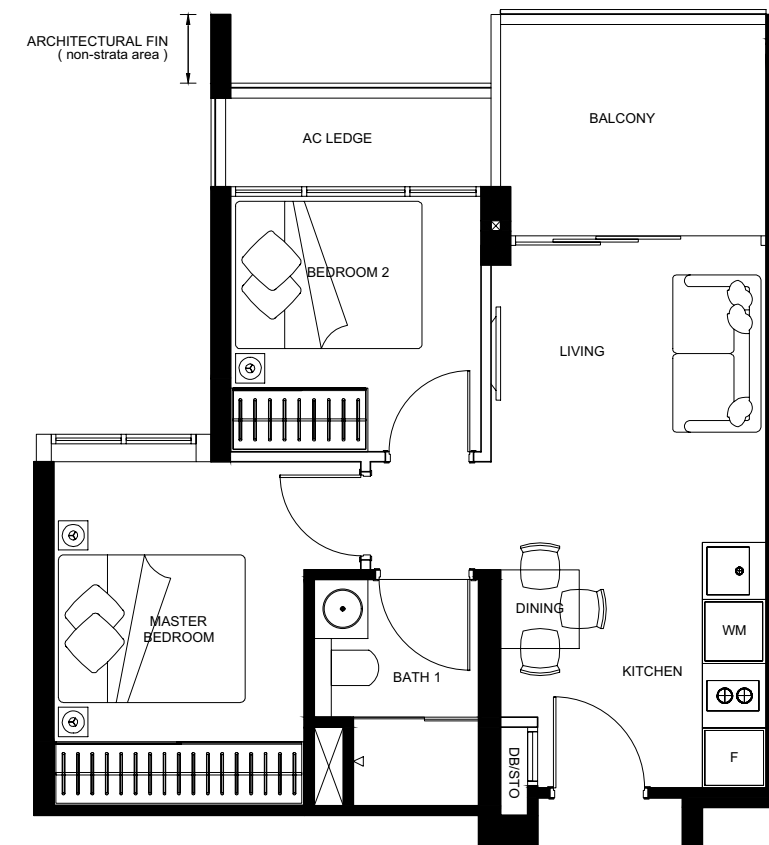


2-BEDROOM

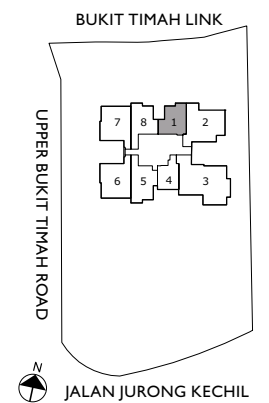
TYPE B1

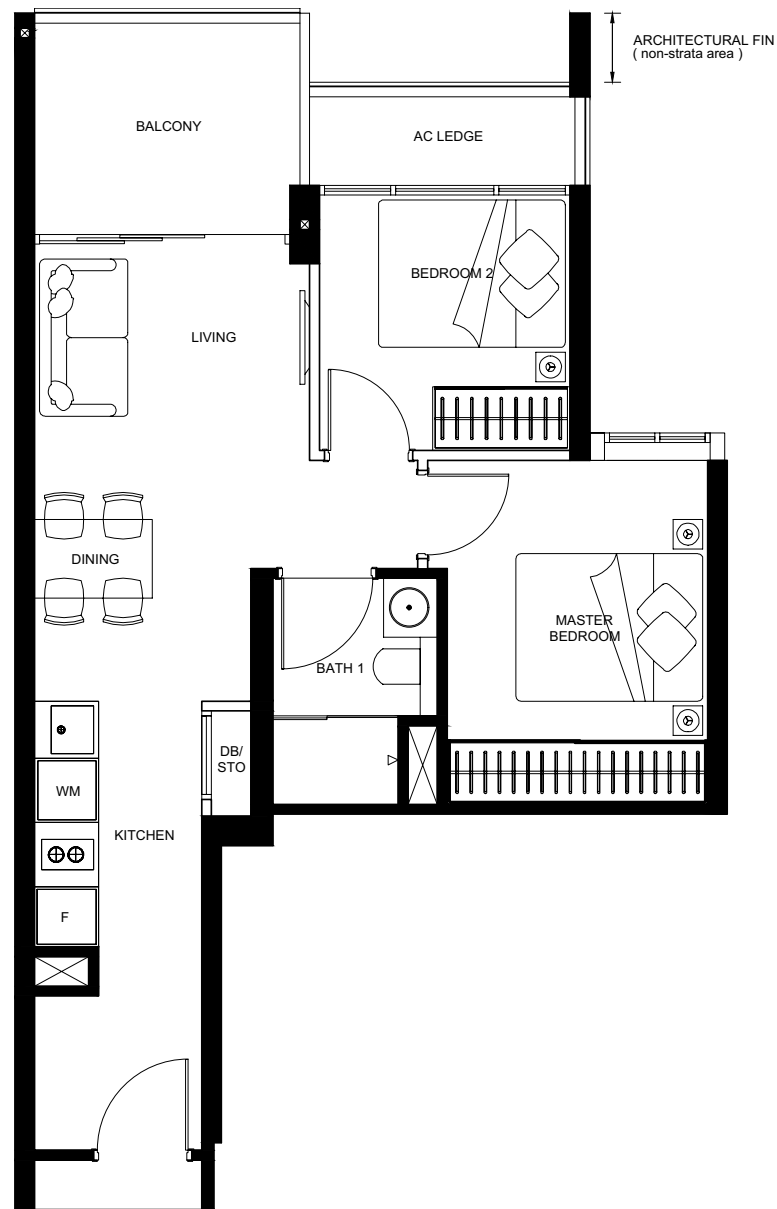
#06-01 – #20-01

51M²



The above plans and illustrations are subject to changes as may be required and approved by the relevant authorities. Floor areas are approximate measurements and are subjected to final survey. The balcony shall not be enclosed unless with the approved screen. For an illustration of the approved balcony screen, please refer to the diagram annexed hereto as "annexure A".



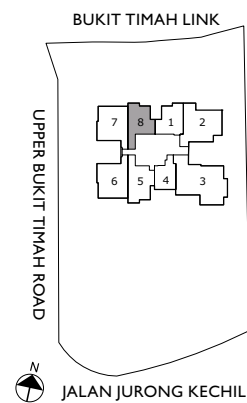


2-BEDROOM

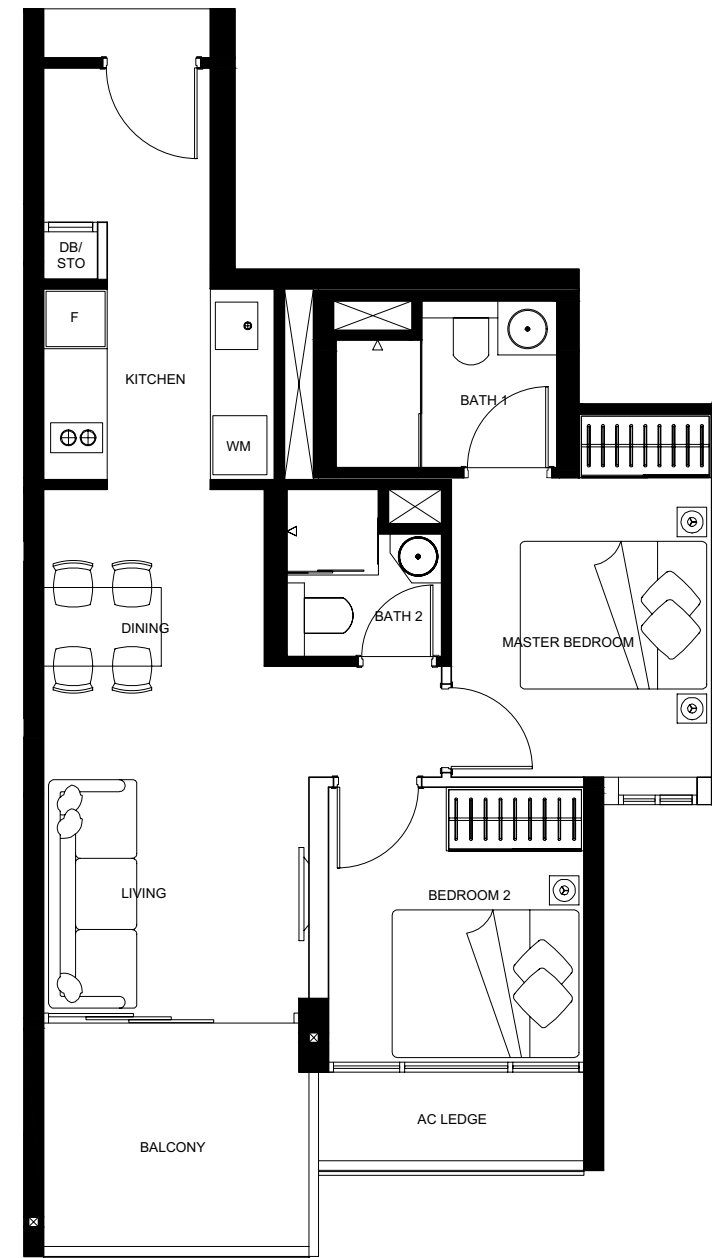
TYPE B2

#06-08 – #20-08

57M²



The above plans and illustrations are subject to changes as may be required and approved by the relevant authorities. Floor areas are approximate measurements and are subjected to final survey. The balcony shall not be enclosed unless with the approved screen. For an illustration of the approved balcony screen, please refer to the diagram annexed hereto as "annexure A".

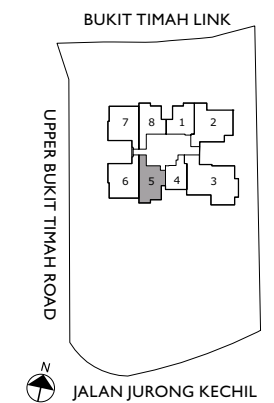


2 PREMIUM-BEDROOM

TYPE B3

#06-05 – #20-05

62M²



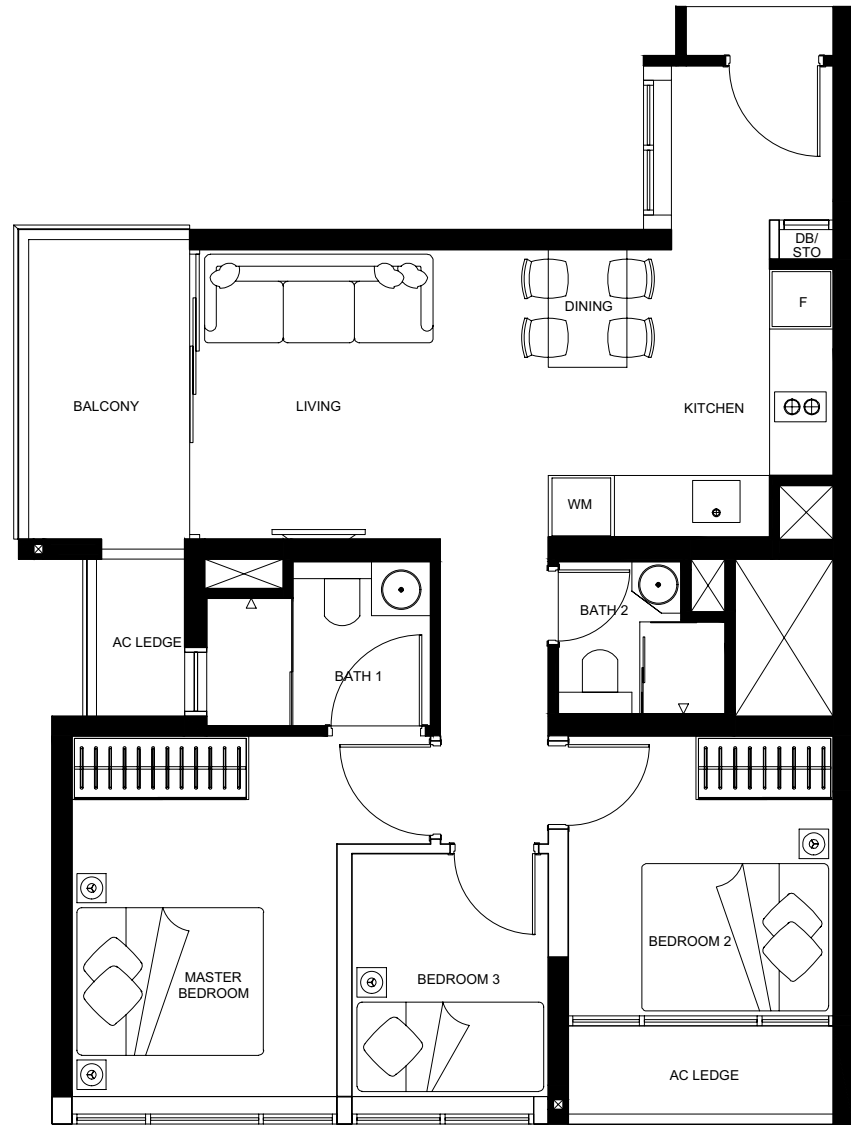
The above plans and illustrations are subject to changes as may be required and approved by the relevant authorities. Floor areas are approximate measurements and are subjected to final survey. The balcony shall not be enclosed unless with the approved screen. For an illustration of the approved balcony screen, please refer to the diagram annexed hereto as "annexure A".

3-BEDROOM

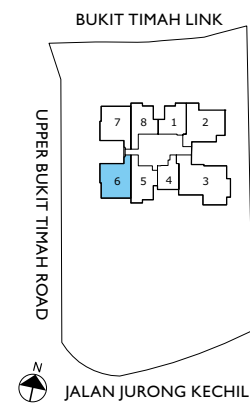
TYPE C1

#06-06 – #20-06

74M²



The above plans and illustrations are subject to changes as may be required and approved by the relevant authorities. Floor areas are approximate measurements and are subjected to final survey. The balcony shall not be enclosed unless with the approved screen. For an illustration of the approved balcony screen, please refer to the diagram annexed hereto as "annexure A".

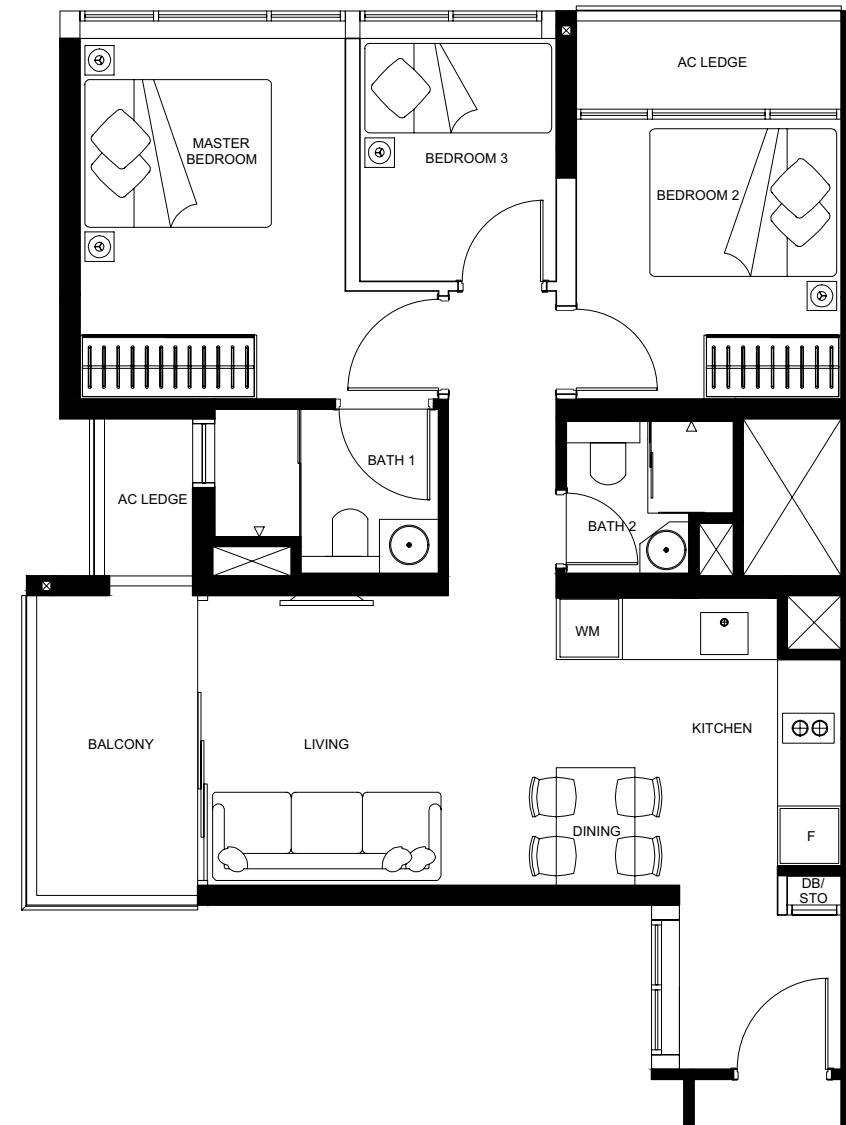


3-BEDROOM

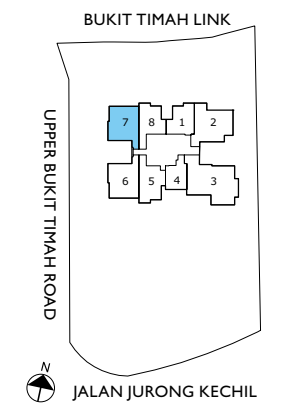
TYPE C2

#06-07 – #20-07

74M²



The above plans and illustrations are subject to changes as may be required and approved by the relevant authorities. Floor areas are approximate measurements and are subjected to final survey. The balcony shall not be enclosed unless with the approved screen. For an illustration of the approved balcony screen, please refer to the diagram annexed hereto as "annexure A".



THE BEDROOM

Luxury comes king-sized with a spacious walk-in wardrobe that provides premium privacy and freedom of space as you gear up for the day ahead, or wind down from it.

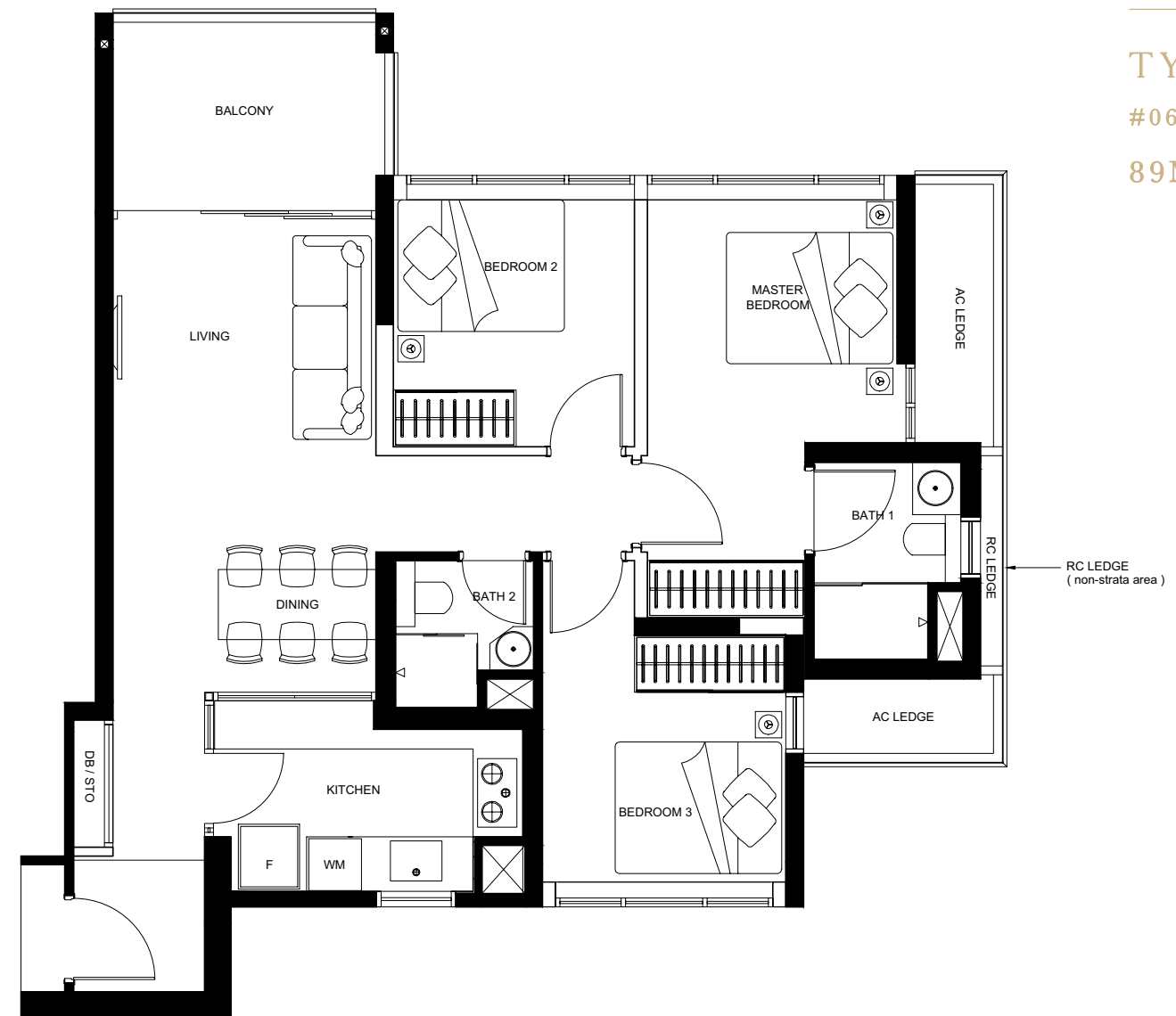


3 PREMIUM -BEDROOM

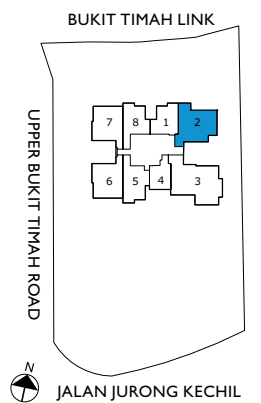
TYPE D

#06-02 – #20-02

89M²



The above plans and illustrations are subject to changes as may be required and approved by the relevant authorities. Floor areas are approximate measurements and are subjected to final survey. The balcony shall not be enclosed unless with the approved screen. For an illustration of the approved balcony screen, please refer to the diagram annexed hereto as "annexure A".

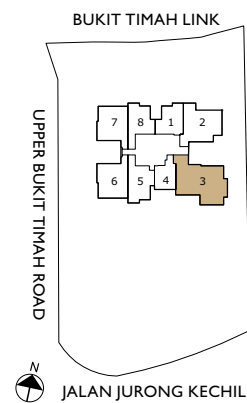
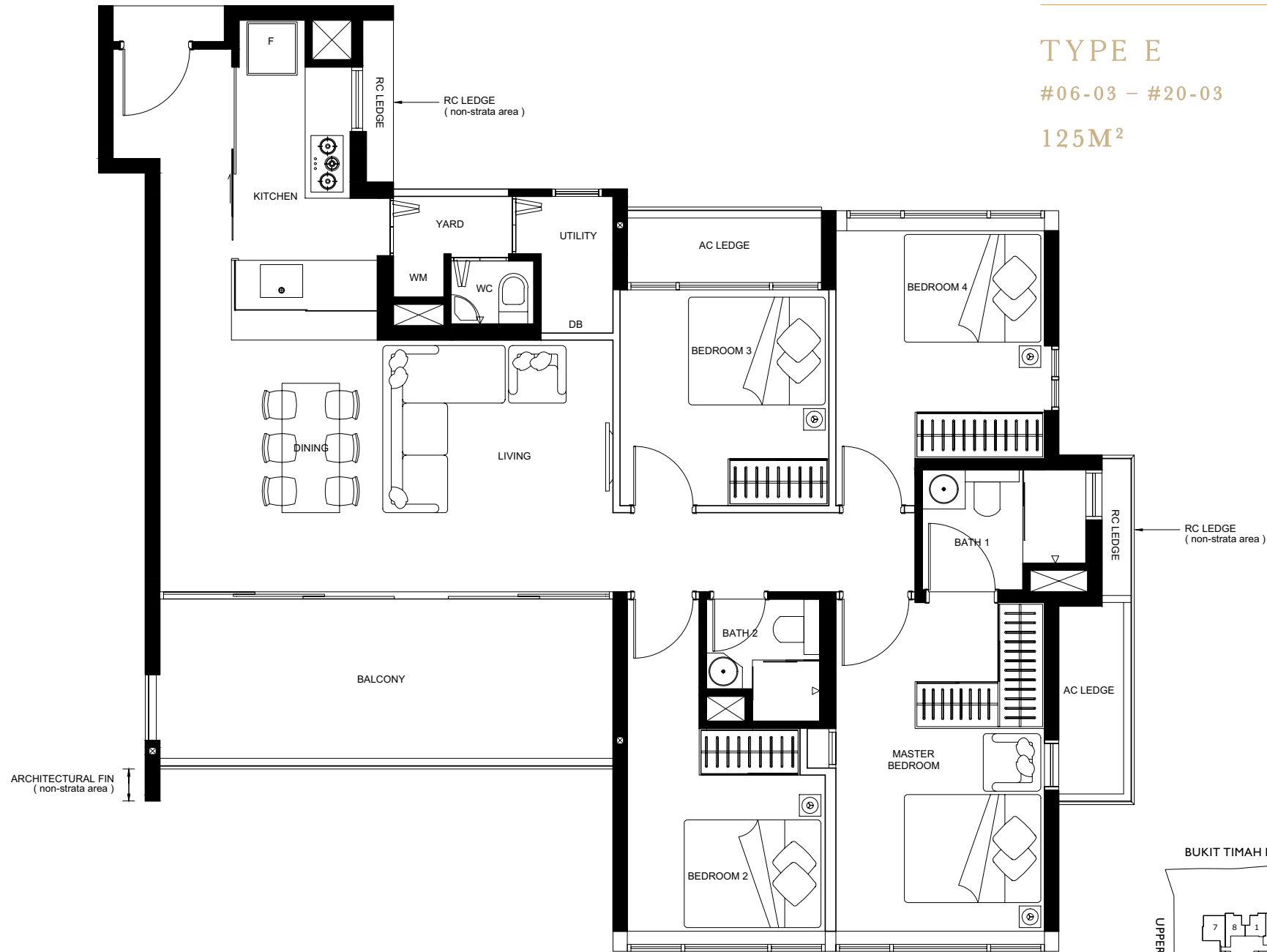


4-BEDROOM

TYPE E

#06-03 – #20-03

125M²



The above plans and illustrations are subject to changes as may be required and approved by the relevant authorities. Floor areas are approximate measurements and are subjected to final survey. The balcony shall not be enclosed unless with the approved screen. For an illustration of the approved balcony screen, please refer to the diagram annexed hereto as "annexure A".



THE BATHROOM

Awash with impeccable fixtures and fittings, the most private of spaces now feels like it too – a soothing sanctuary where you can truly leave the world behind.

S

MART LIVING ON A SILVER PLATTER



Life can be so simple with a Smart Home System that understands your needs. With technology at your beck and call, you can unlock your front door via mobile app, enhance security with remote surveillance, and turn on the air-conditioning before you arrive home.



AIR-CON CONTROL



SMART GATEWAY
WITH PT CAMERA



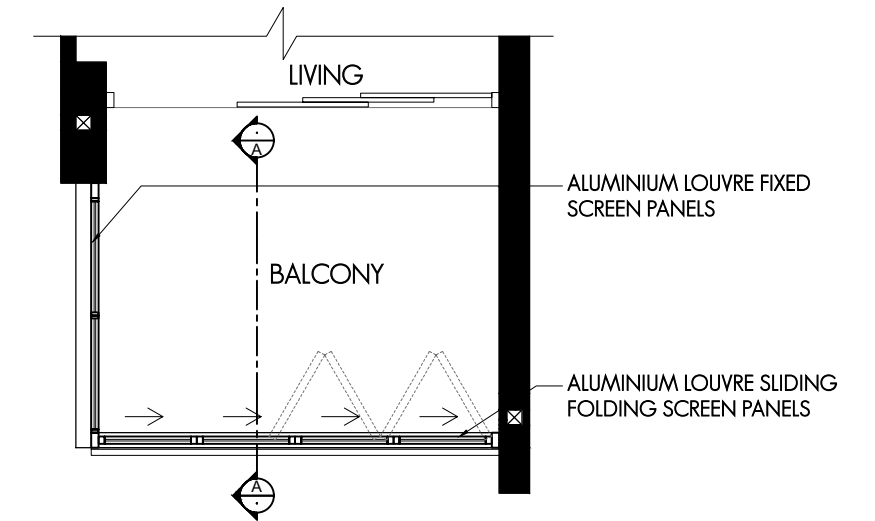
DIGITAL LOCKSET

B

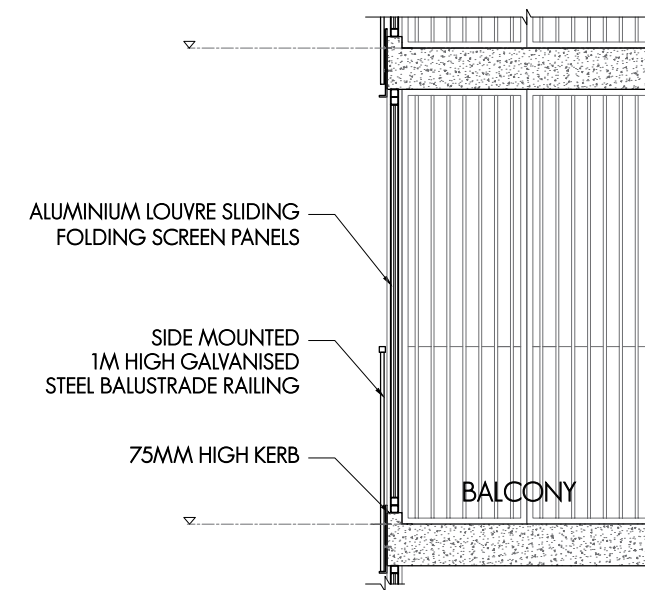
ALCONY SCREEN
(ANNEXURE A)

NOTES:

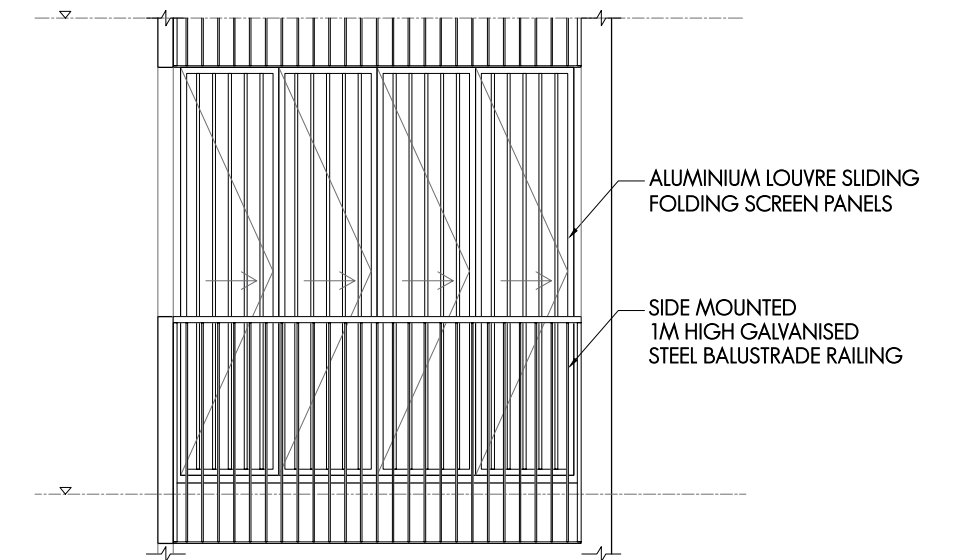
1. THE BALCONY SHALL NOT BE ENCLOSED UNLESS WITH THE APPROVED BALCONY SCREEN AS SHOWN ("APPROVED SCREEN");
2. BALCONY SCREEN IS NOT PROVIDED. THE COST OF SCREEN AND INSTALLATION OF THE APPROVED SCREEN SHALL BE BORNE BY THE PURCHASER;
3. ON-SITE VERIFICATION IS NECESSARY TO OBTAIN ACTUAL MEASUREMENTS PRIOR TO FABRICATION AND INSTALLATION OF THE APPROVED SCREEN.



TYPICAL PLAN OF BALCONY SCREEN



SECTION A-A



TYPICAL ELEVATION OF BALCONY SCREEN